

Rolling Screen Door Systems BugDoors.com



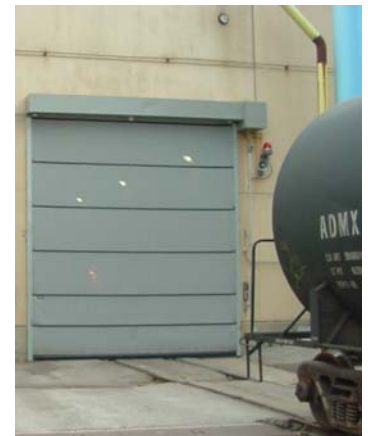
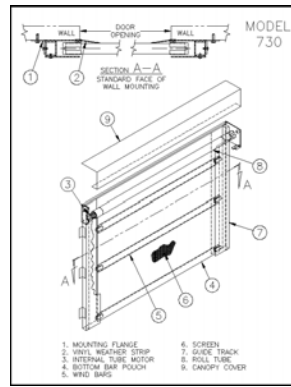
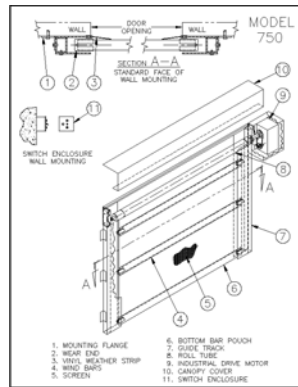
Model 750

- Heavy duty steel tube frame header and motor box is welded for solid construction and powder coated for long life.
- The header and motor box are sheeted with 24 gauge powder coated sheet metal.
- The track is constructed of 1/8" steel flats welded to 11 gauge steel tubing to support the door header. It is powder coated to match the header.
- The motor drives a 4" roll tube that has machined drive and idler plugs spinning on 1" bearings.
- Curtain comes with built in windbars and bottom bar. A chain is inserted into the bottom weather-strip pouch to keep the door in contact with the floor.
- The motor is a belt drive system with a continuous duty cycle rating. There are optional gear head and belt drive motors.
- Standard control comes with a three button open, close, stop push button. There are hundreds of control options available to operate this door system.
- Model 750 screen door system is shipped with the motor and curtain pre-assembled to the header for quick installation.
- Uses for this door are unlimited and will fit almost any opening. Available in widths up to 40 feet wide.



Model 730 & 740

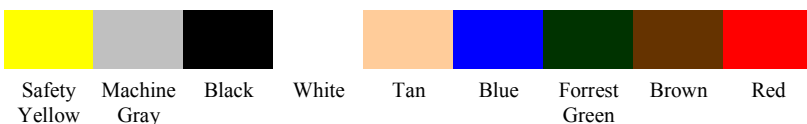
- Similar to model 750 except header is constructed of steel angles, motor system is an internal roll-tube motor with limited control options, bottom does not have a chain inserted for floor contour.
- The uses for these doors are loading docks, one directional traffic doors and limited use doors.



Heavy Duty Vinyl Coated
Polyester Mesh
14 Screen Colors

Powder Coated Frame Colors

Standard colors shown with hundreds of custom colors available.
Colors may not appear exactly as actual color finish



Door Sales Inc.
Industrial Door Solutions

15252 Stony Creek Way Suite 103
Noblesville, IN 46060 USA
800-839-2293 fax 317-773-9275
www.doorsales.net