

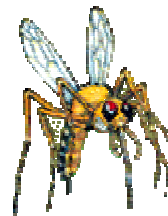
# Sectional Overhead Screen Door Systems

## BugDoors.com

Screen Door System allows fresh air to circulate in your building while keeping out bugs, birds, blowing debris, and unwanted intruders.

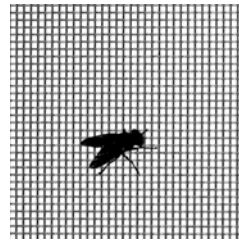
Doors are typically used in: Food, Pharmaceutical, Coating, Packaging, and Power Plants; Distribution Centers; Restaurants; Animal Cages.

Raise plants A.I.B. or A.S.I. Inspection ratings. Doors are compliant with USDA and FDA guidelines.



### Panel Construction

Heavy duty rails constructed of 2" x 2" x 1/8" thick extruded aluminum. Powder coated finish applied. Screen mesh mechanically fastened into the rails. Compression weather-strip between the sections to ensure a bug tight fit. Bottom weather-strip astragal. Security bars optional. Sizes up to 28 feet wide.



### Screen Mesh Options

#### Stainless Steel

1816 mesh x .009 with 304 finish  
3030 mesh x .012 with 304 finish

#### Vinyl Coated Polyester

17x13 in 14 colors



### Powder Coated Frame Colors

Standard colors shown with hundreds of custom colors available.

Colors may not appear exactly as actual color finish



Diverter Switch with bottom fixture

**Track Mounting Options** for 2" or 3" vertical or high lift track.

**Diverter Switch** allows the use of a shared lower track with the existing overhead door. The screen door seals against the frame and existing jamb weather-stripping. Great for insect control and use in security when existing bollards are in place.

**Dual Track** creates a secondary track for the screen to operate in. Used in rolling door and security applications. Can be used for insect control with weather-stripping. The track is attached with an 8" steel powder coated spacer plate.



PO Box 215  
Carmel, IN 46082-0215  
800-839-2293 / 317-846-6750  
Fax 317-846-6753  
www.doorsales.net